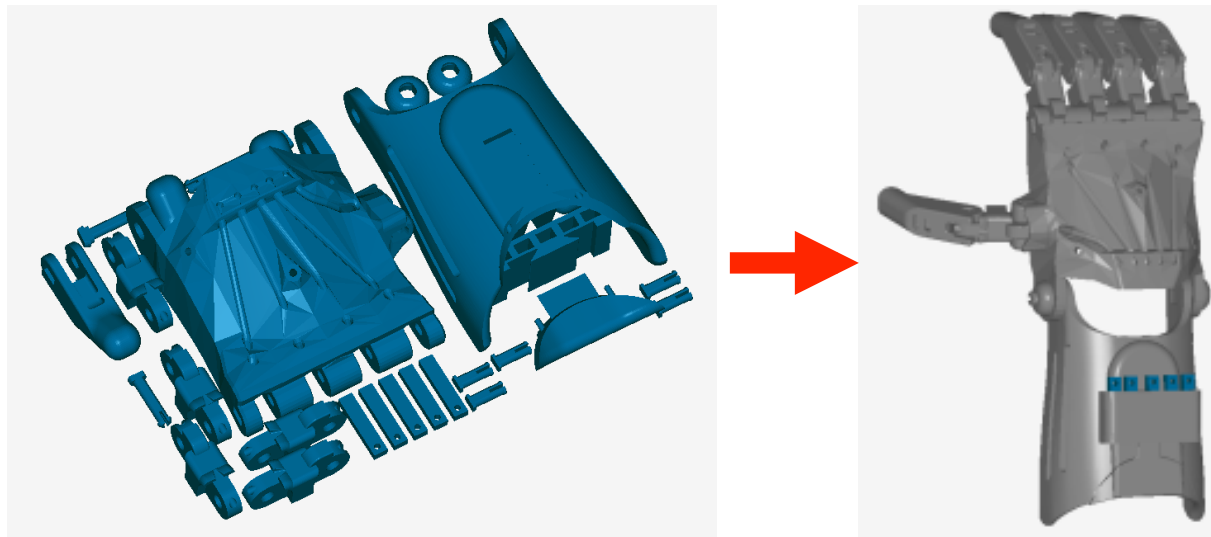


RAPTOR



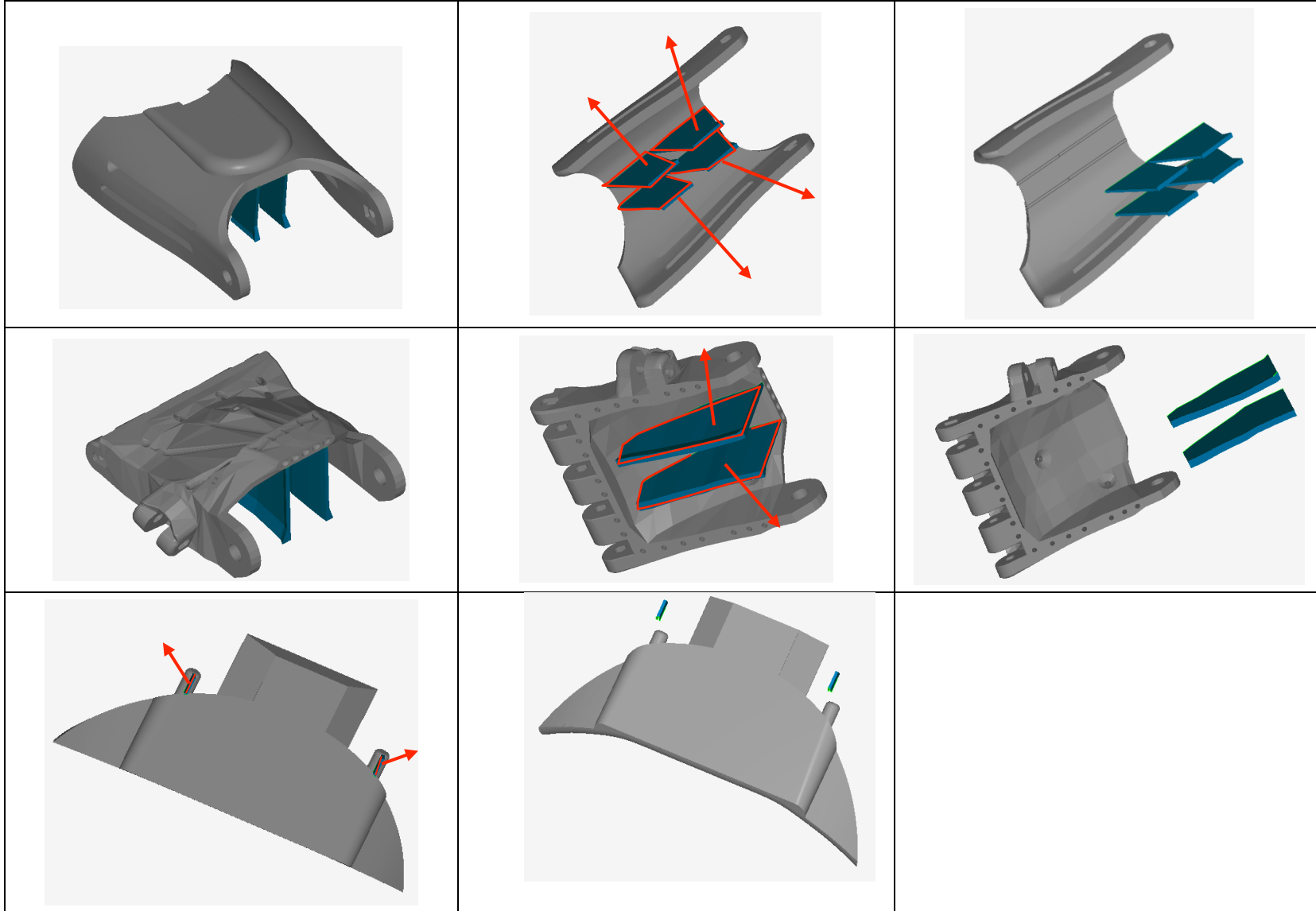
Revision 2, 2014

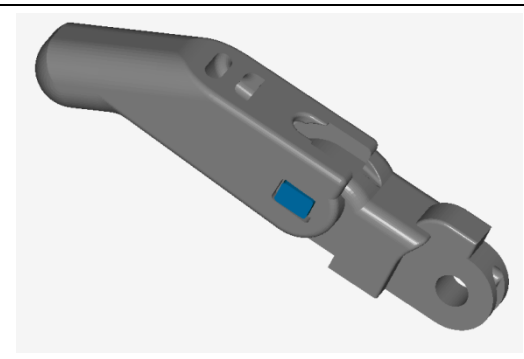
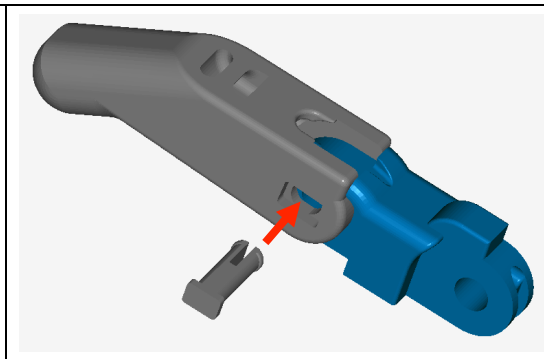
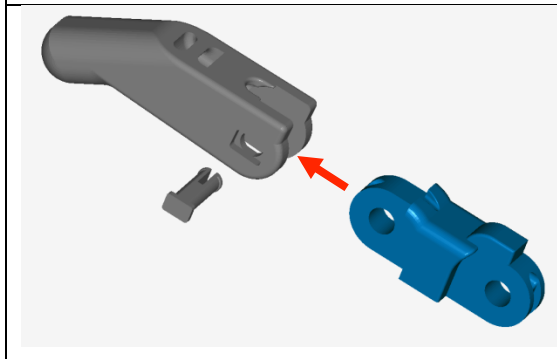
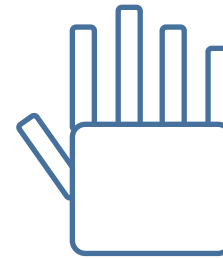
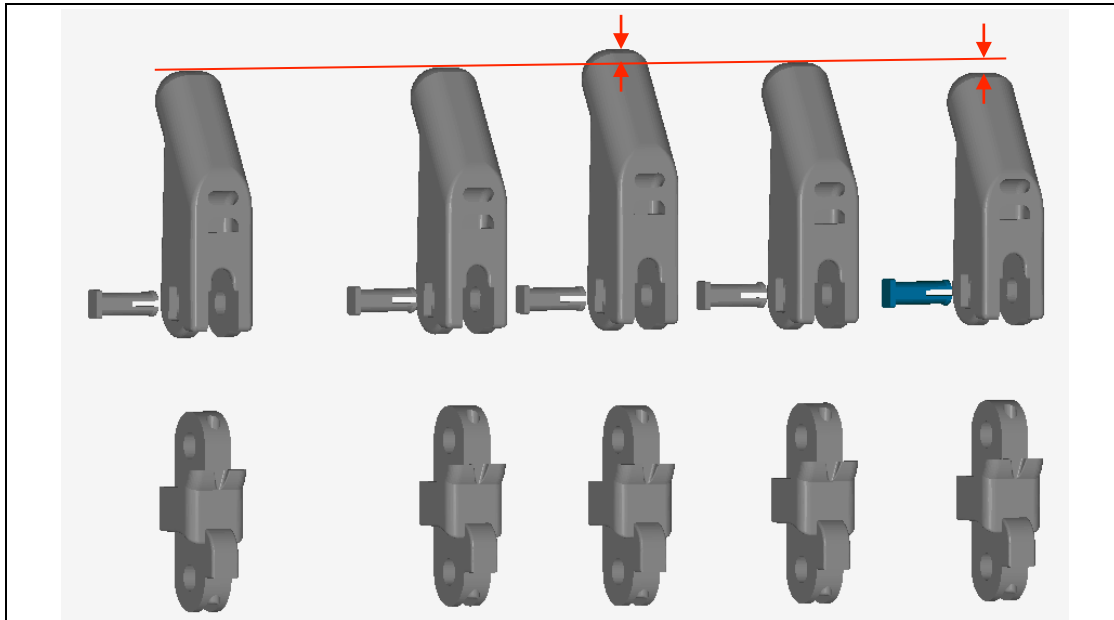
First revision written by Michel Agronin of Direct Dimensions
based on the video tutorial by Jeremy Simon and
using print files by Peter Binkley, Ivan Owen, Frankie Flood, and Andreas Bastian, with contributions by many others.
Second revision by Jeremy Simon



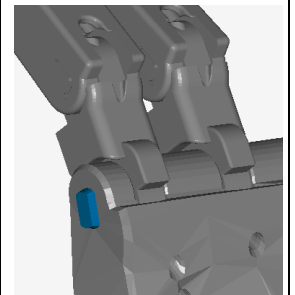
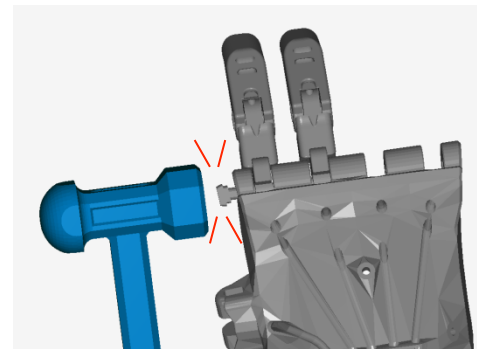
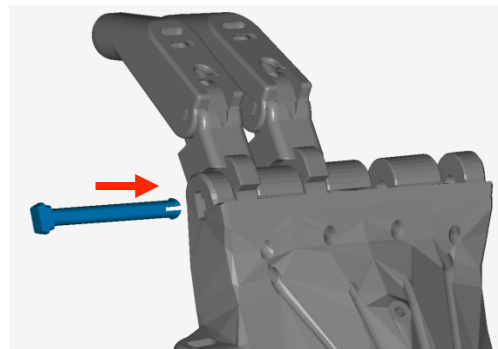
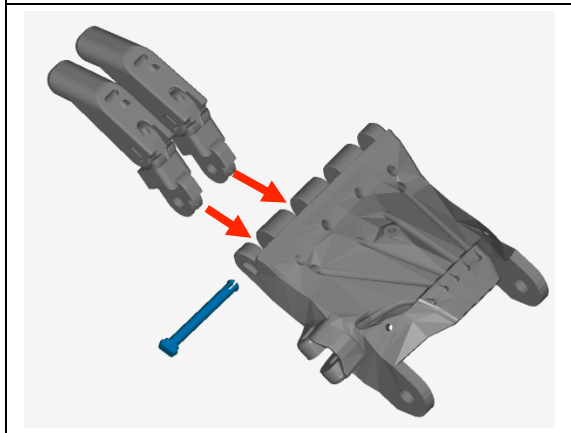
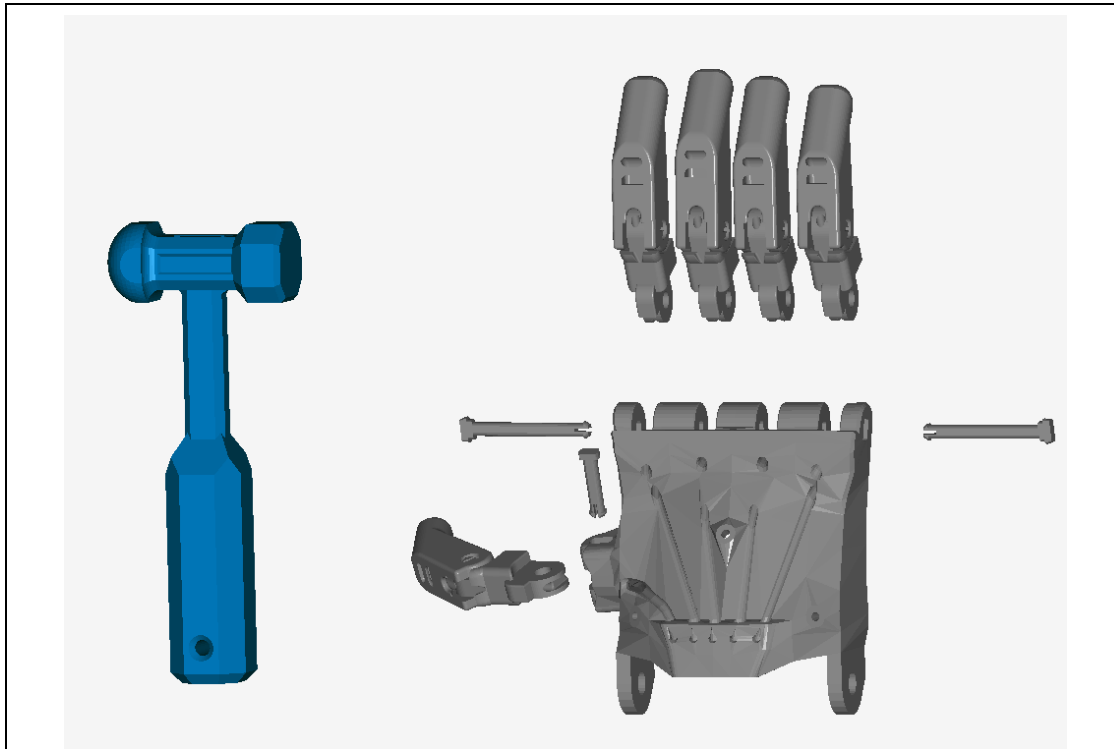
This work is licensed under the Creative Commons-Attribution-Share Alike License.
To view a copy of the license, visit <http://creativecommons.org/licenses/by-sa/3.0/>

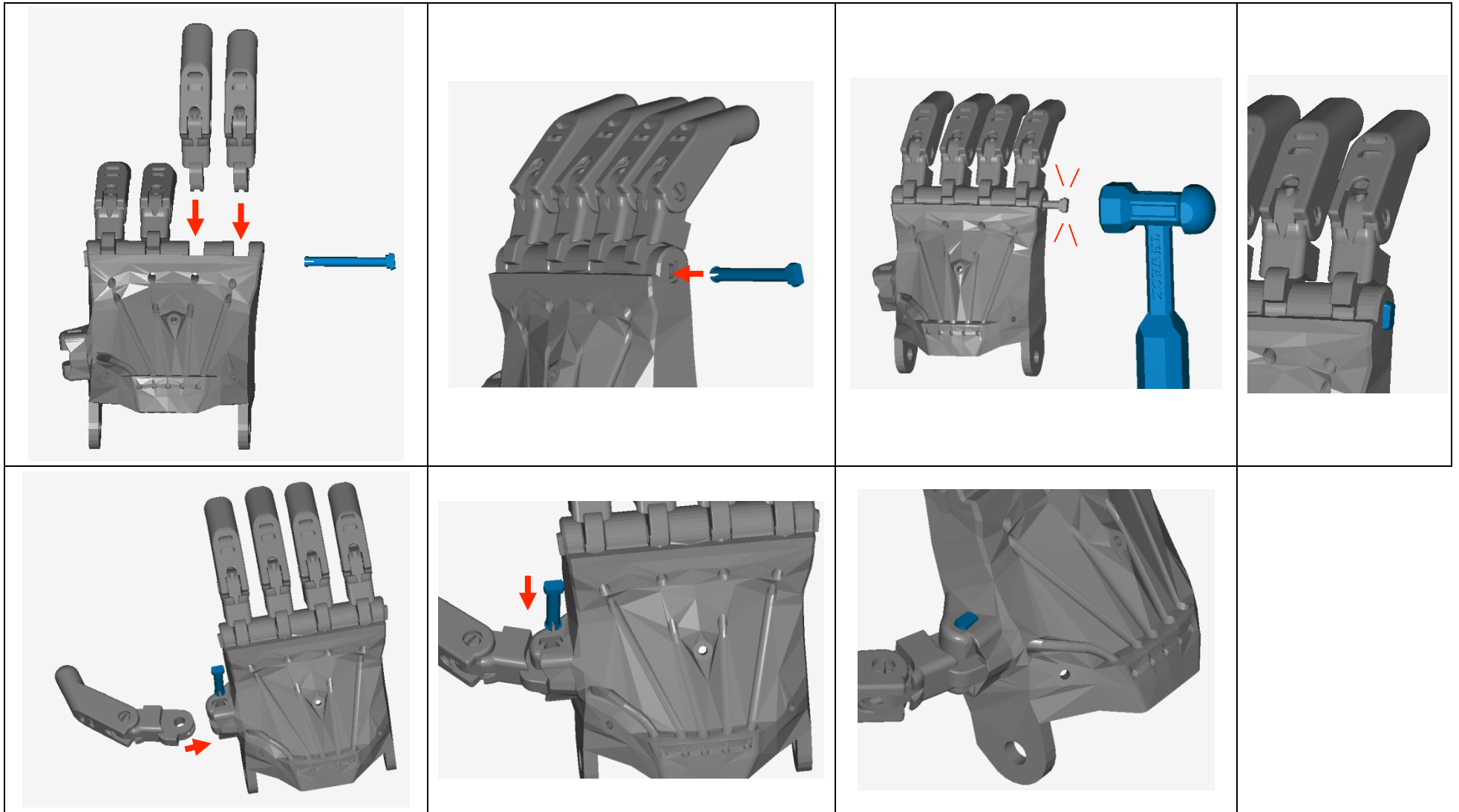
Raptor Assembly Instructions v. 1.1

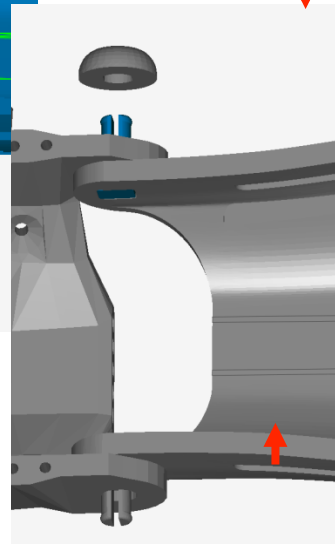
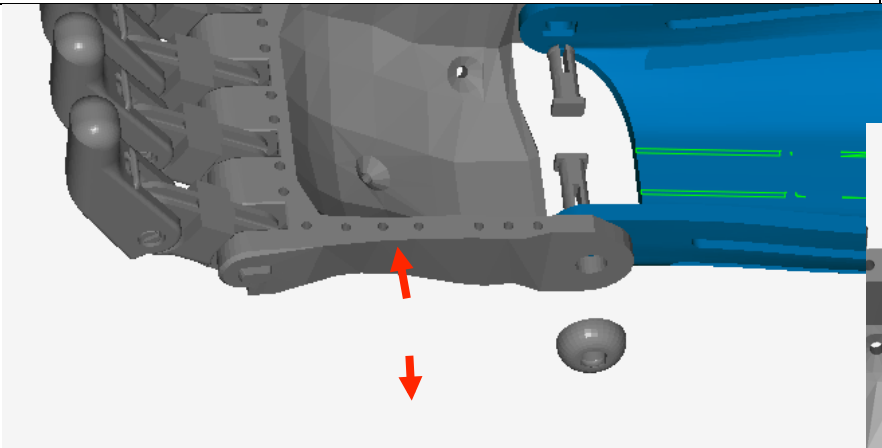
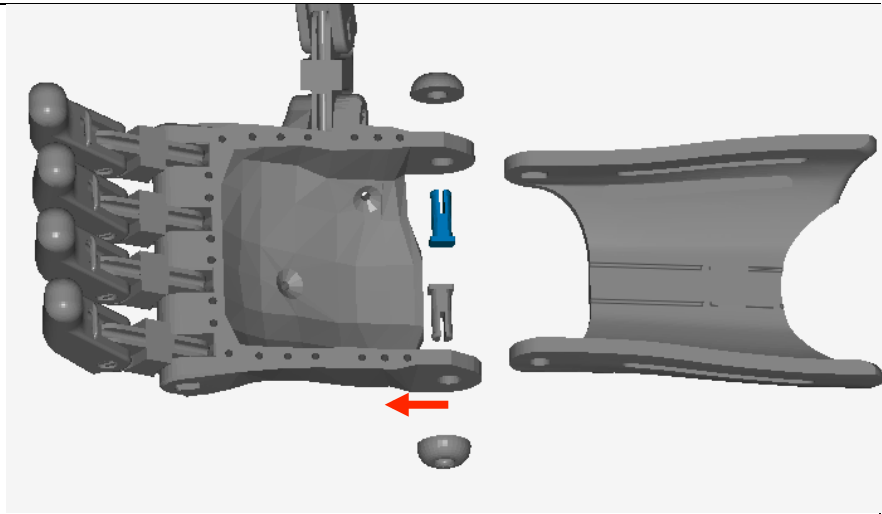


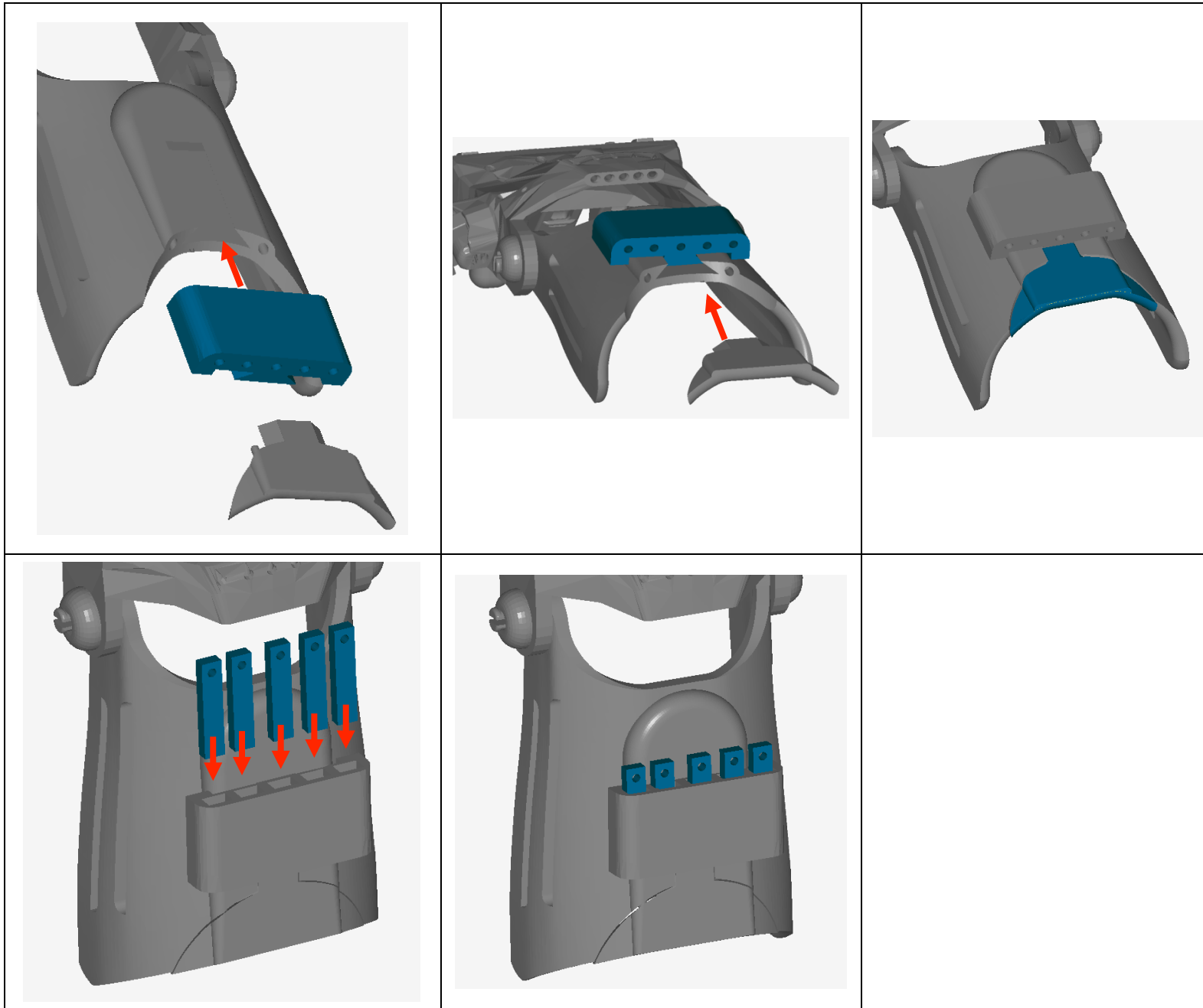


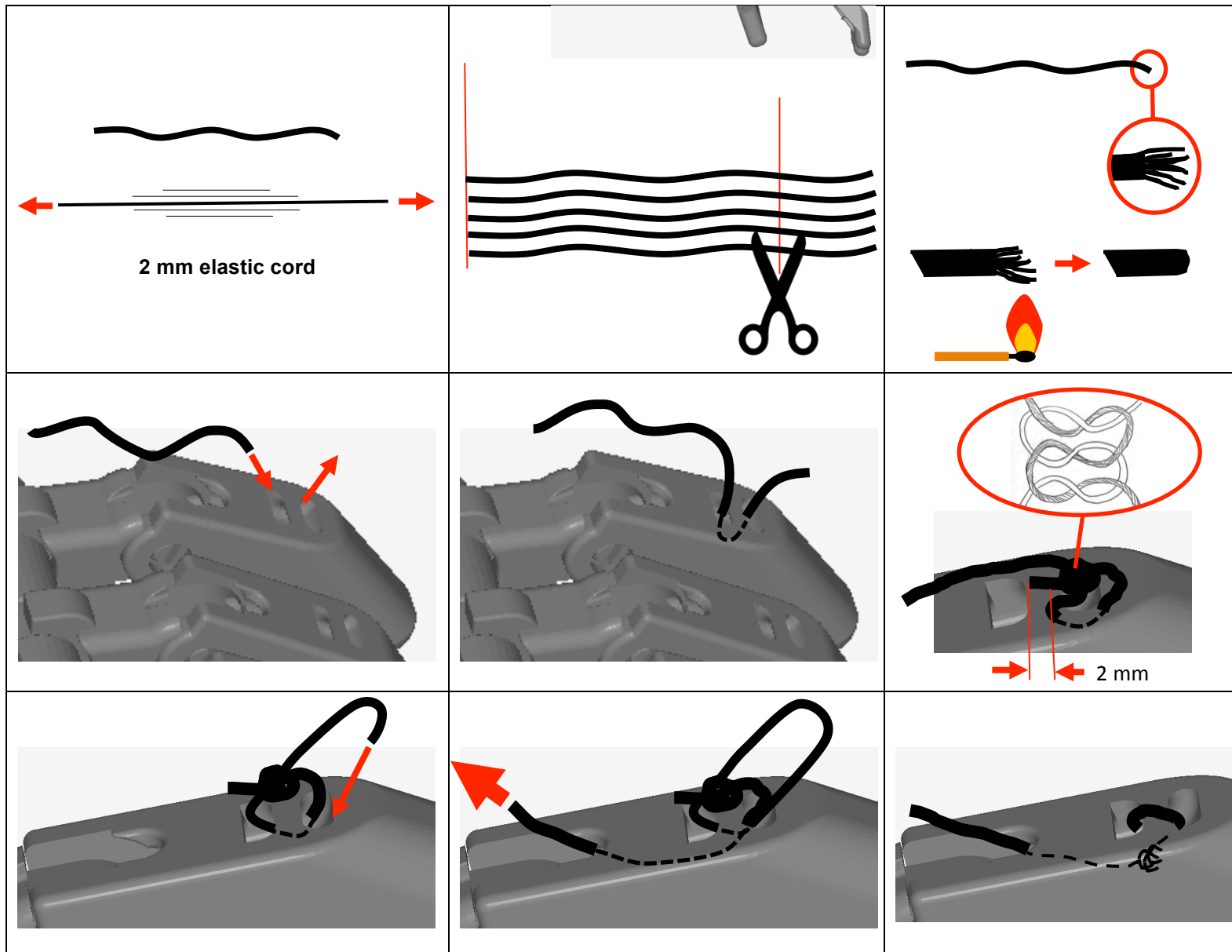
X 5

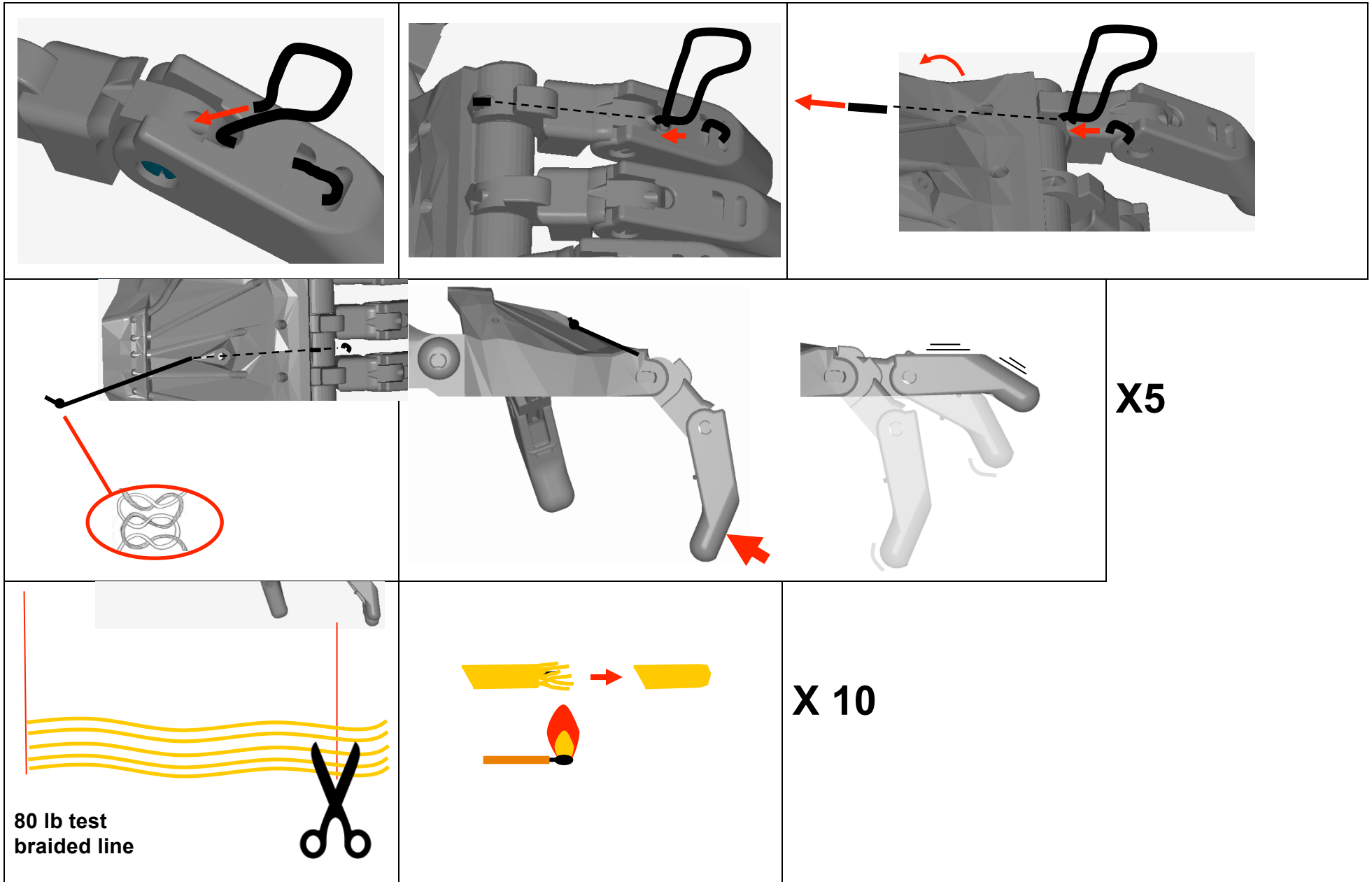


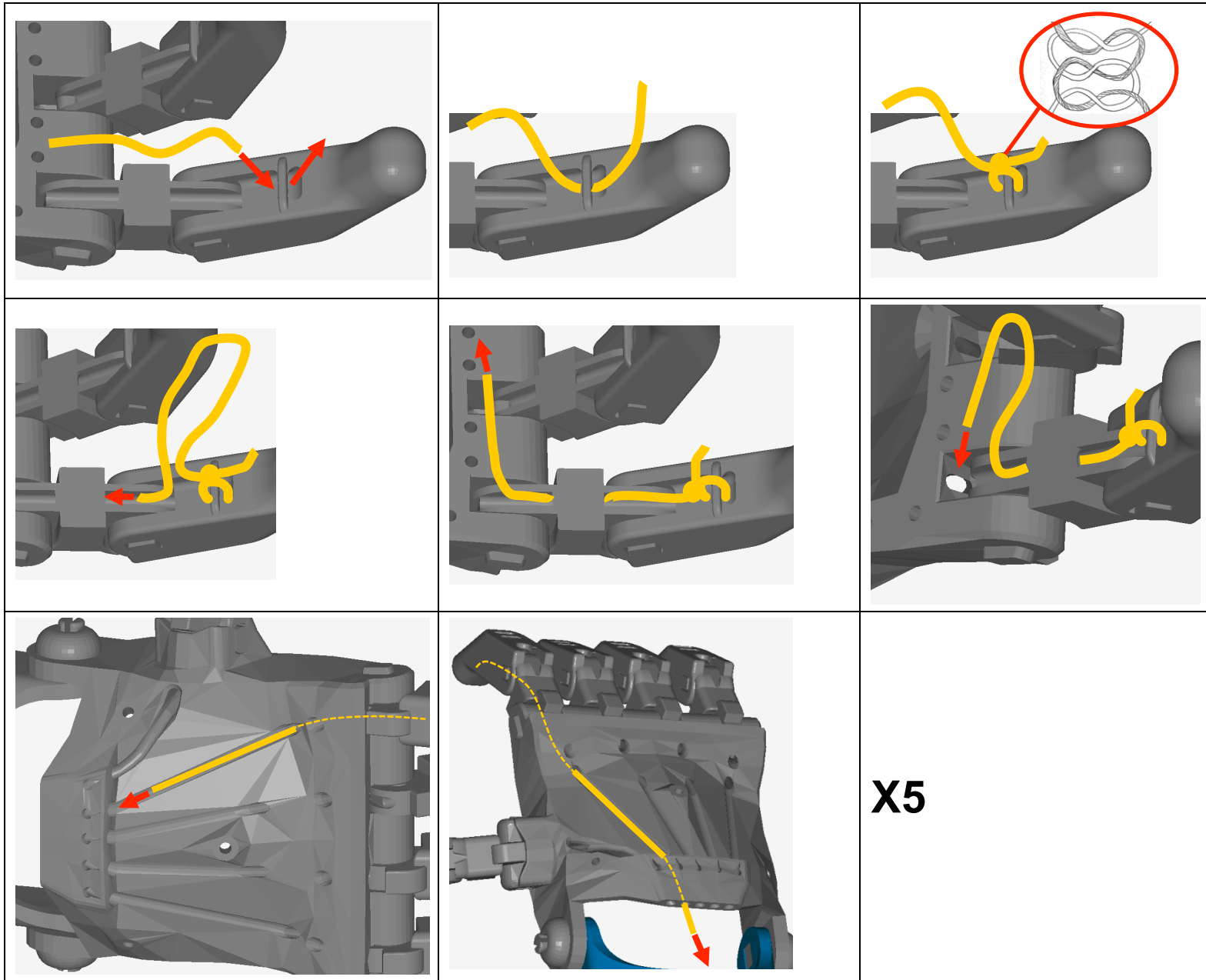


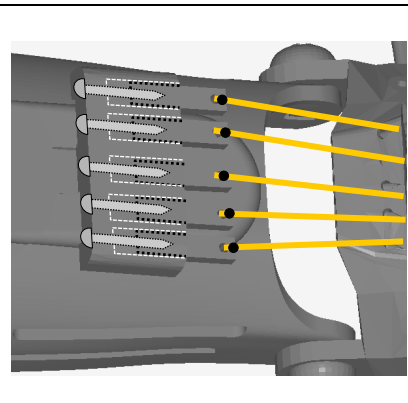
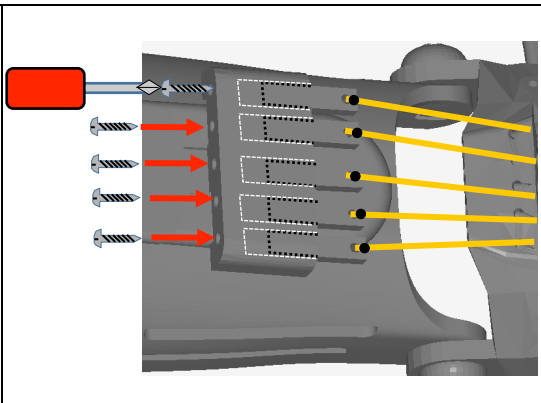
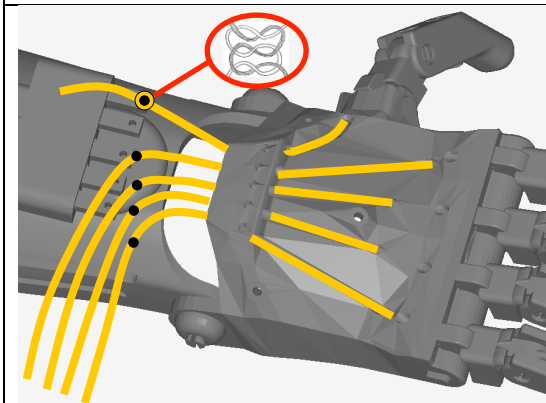
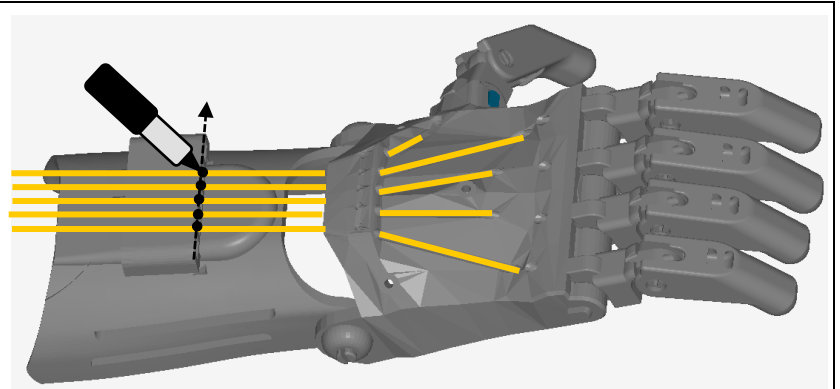
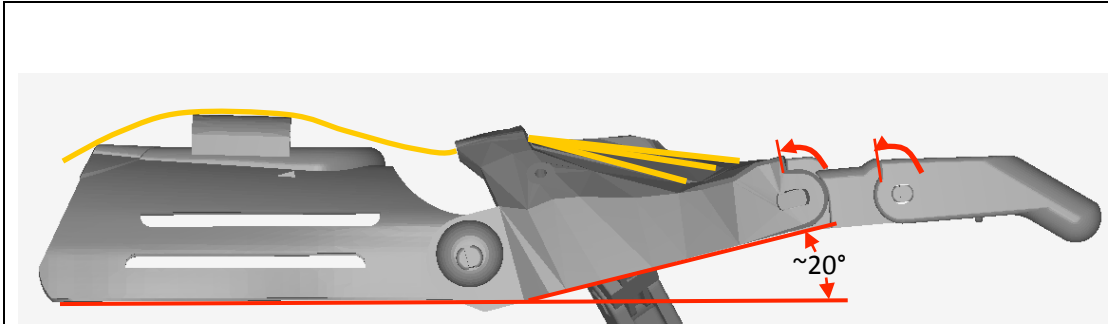



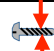



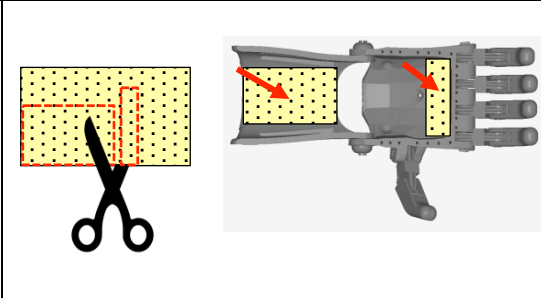
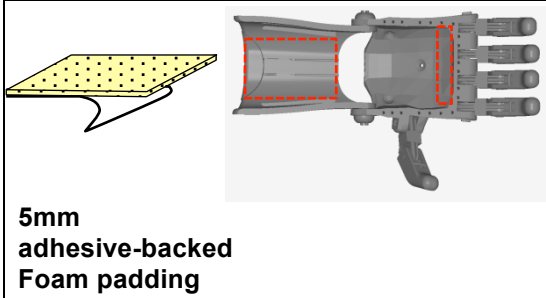


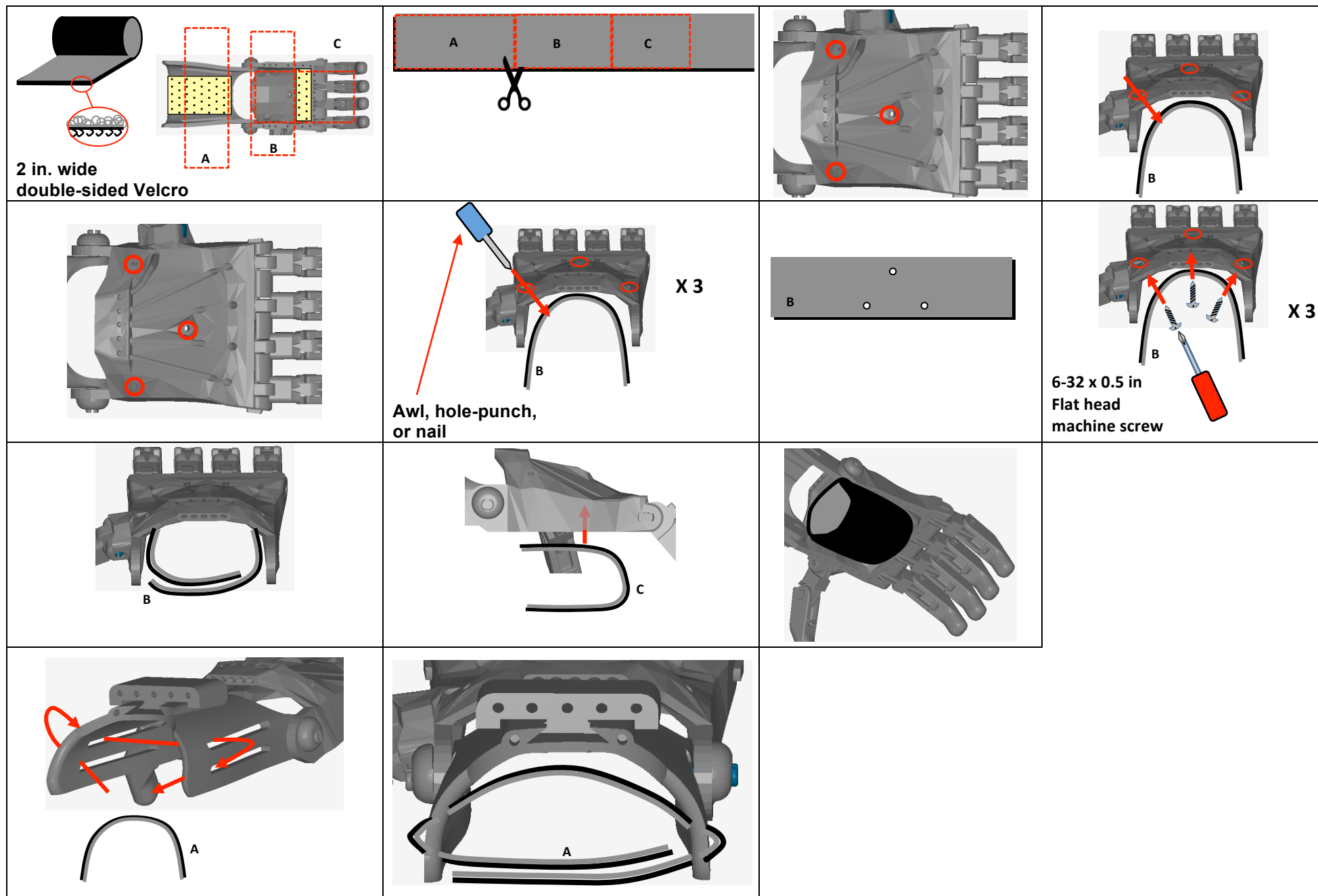






		
100%	#2	0.625 in.

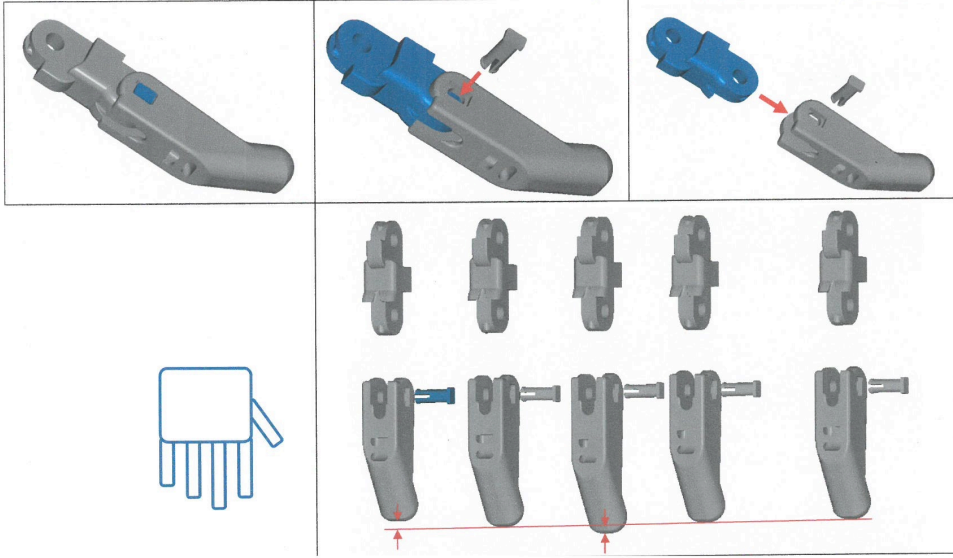
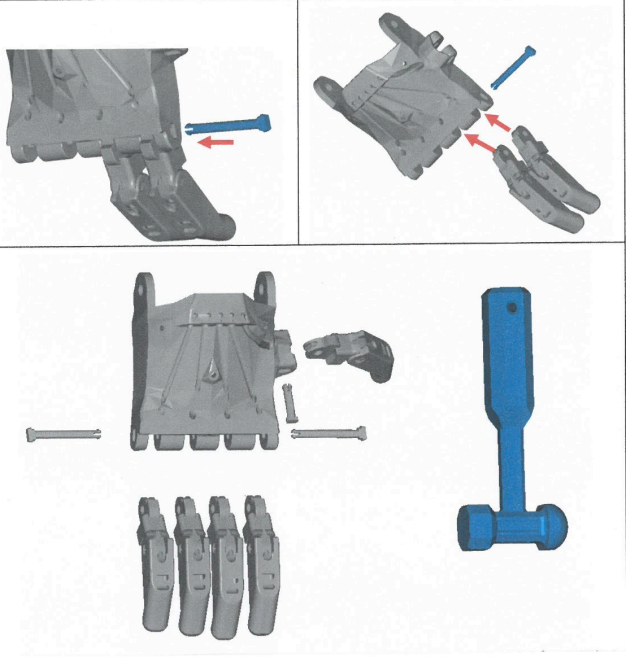
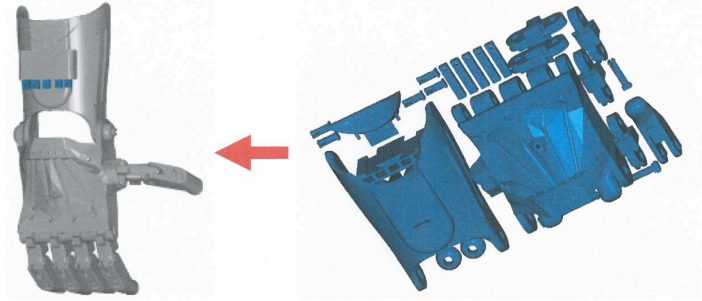




The following two pages are intended to be used as a placemat for workshops. Print these two pages double-sided.

If you work on a hand,
please sign the card.

RAPTOR



X 5

